

E F N O T E D R U M S

Optional Components

Reference Guide



EN

Contents

Kick (Bass drum)	3
EFD-K08P	3
EFD-K12P	4
Wood Shell Models (EFD-K1612, -K2015, etc.)	5
Snare Drum	6
EFD-S12P	6
Wood Shell Models (EFD-S1250, -S1455, etc.)	6
Tom / Floor Tom	8
EFD-T10P, -T12P	8
Wood Shell Models (EFD-T1070, -T1212, etc.)	8
Cymbal	9
Standard Cymbal (EFD-C16, -C18, etc.)	9
Ride Cymbal (EFD-C20)	9
Splash Cymbal (EFD-C08)	9
Effect Cymbal (EFD-C17FX)	10
China Cymbal (EFD-C18CH)	10
Flex Cymbal Mount STAK™	11
Hi-Hat	12
EFD-H14	12
Hi-Hat Pedal (EFD-HC3)	13

For the detailed information of the optional components, please visit the EFNOTE website.

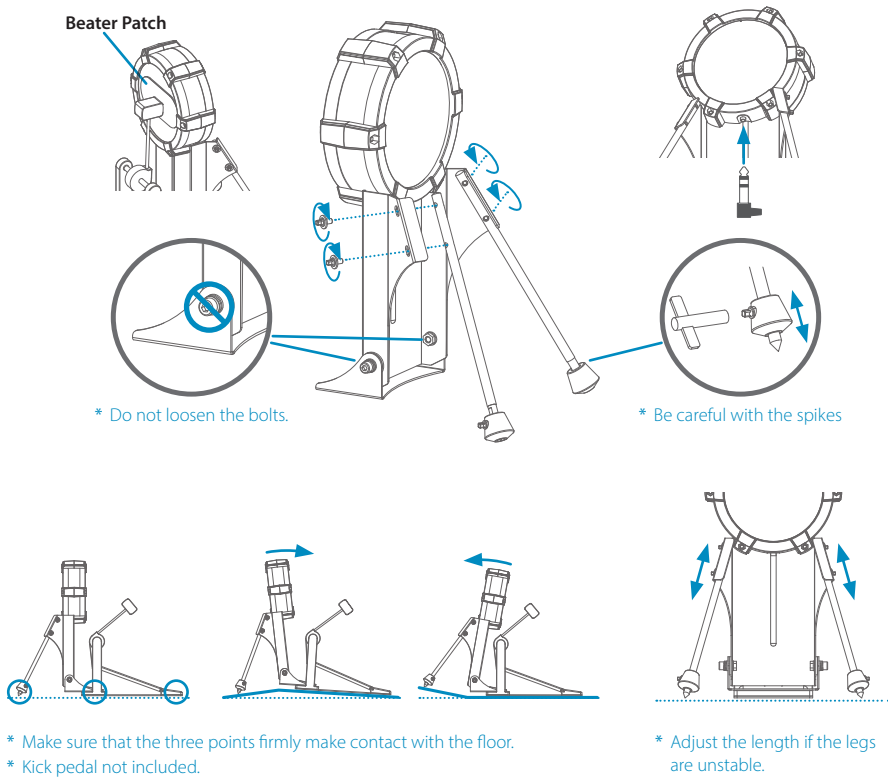
ef-note.com/products/drums/components/components.html



- * Read this guide in combination with the Optional Components Owner's Manual.
- * Before using this product, read "IMPORTANT SAFETY INSTRUCTIONS" in the Owner's Manual.
- * Specification and design are subject to change without prior notice.
- * EFNOTE is a trademark or registered trademark of Ef-Note Inc.
- * Company names or product names etc. appearing in this document are the registered trademarks or trademarks of their respective corporate owners.

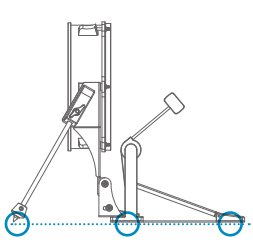
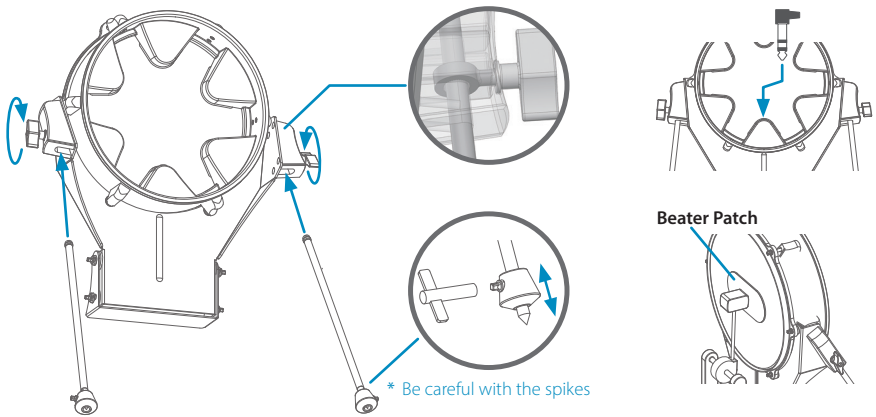
Kick (Bass drum)

■ EFD-K08P



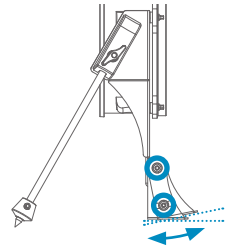
- * Be sure to tighten all knobs and bolts firmly.
- * If a felt beater is used for the kick, the felt will be more liable to wear.
- * Use the included beater patch to protect the drum head surface of the kick against wearing.
- * The beater patch is a consumable item. If it is damaged, replace it as soon as possible.

■ EFD-K12P

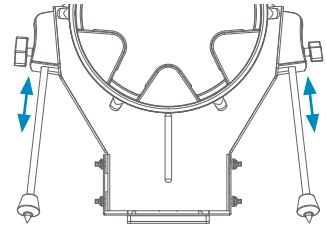


* Make sure that the three points firmly make contact with the floor using the adjustments below.

* Kick pedal not included.



* Adjust the angle of the base plate if your kick pedal is unstable. (Loosen four bolts to adjust.)



* Adjust the length if the legs are unstable.

* Be sure to tighten all knobs and bolts firmly.

* Adjust the tension of the drum head appropriately before use. If the tension is insufficient, the sensitivity will be inconsistent.

* As you play for an extended time, the drum head tension gradually loosens. Adjust the tension periodically.

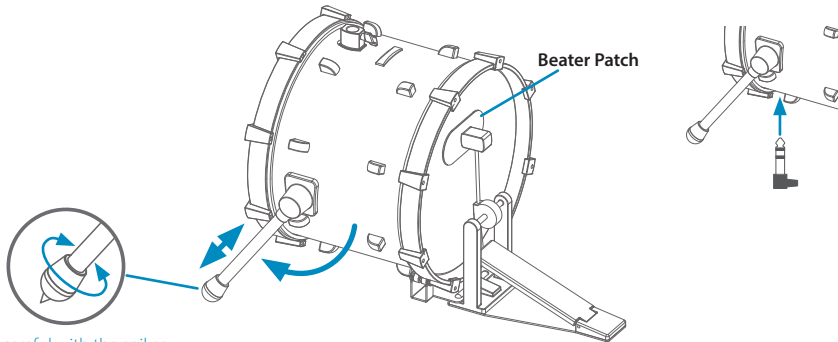
* If a felt beater is used for the kick, the felt will be more liable to wear.

* Use the included beater patch to protect the mesh drum head of the kick against wearing.

* The mesh drum head, or the beater patch is a consumable item. If it is damaged, replace it as soon as possible.

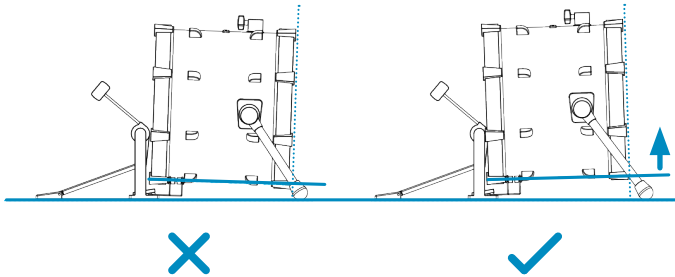
■ Wood Shell Models (EFD-K1612, -K2015, etc.)

(Representative model is shown)



* Be careful with the spikes

* Kick pedal not included.

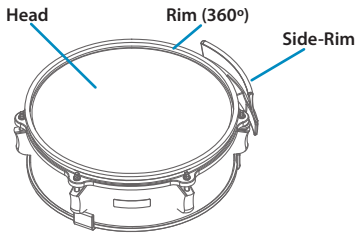


* Adjust the length of the legs so that the front head faces slightly upward.

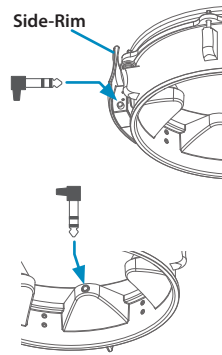
- * Be sure to tighten all knobs and bolts firmly.
- * Adjust the tension of the drum head appropriately before use. If the tension is insufficient, the sensitivity will be inconsistent.
- * As you play for an extended time, the drum head tension gradually loosens. Adjust the tension periodically.
- * If a felt beater is used for the kick, the felt will be more liable to wear.
- * Use the included beater patch to protect the mesh drum head of the kick against wearing.
- * The mesh drum head, or the beater patch is a consumable item. If it is damaged, replace it as soon as possible.
- * In case the foot-board of the kick pedal contacts with the hoop, make sure the initial angle of the beater is adjusted correctly. (EFD-K1612)

Snare Drum

■ EFD-S12P

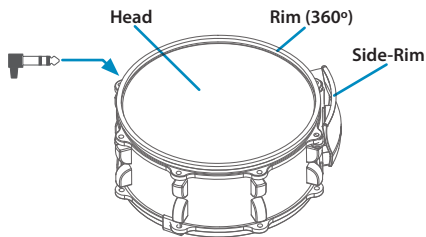


* The attachment position of the side-rim can be changed in the right side or left side.

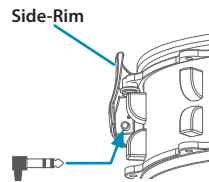


■ Wood Shell Models (EFD-S1250, -S1455, etc.)

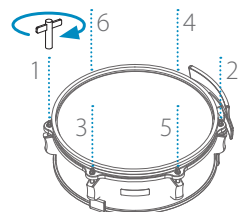
(Representative model is shown)



* The attachment position of the side-rim can be changed in the right side or left side.



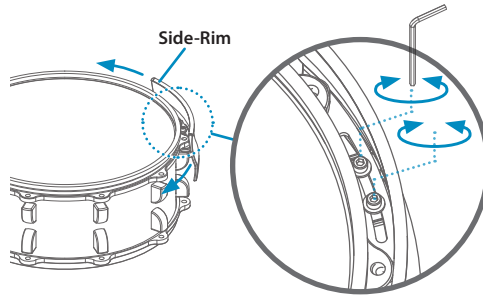
- * Adjust the tension of the drum head appropriately before use. If the tension is insufficient, the sensitivity will be inconsistent.
- * As you play for an extended time, the drum head tension gradually loosens. Adjust the tension periodically.
- * The mesh drum head or the hoop rubber is a consumable item. If it is damaged, replace it as soon as possible.



EFD-S1455**Adjusting the Side-Rim Position**

The side-rim can be slided side to side, to adjust its position.

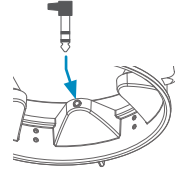
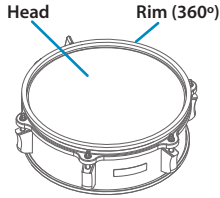
Loosen the bolts shown in the figure with included hex key, and adjust the position, then tighten up the bolts again.



Tom / Floor Tom

■ EFD-T10P, -T12P

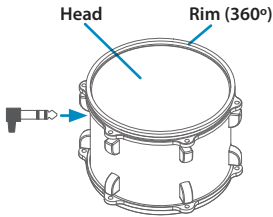
(Representative model is shown)



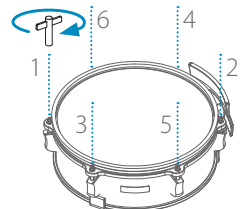
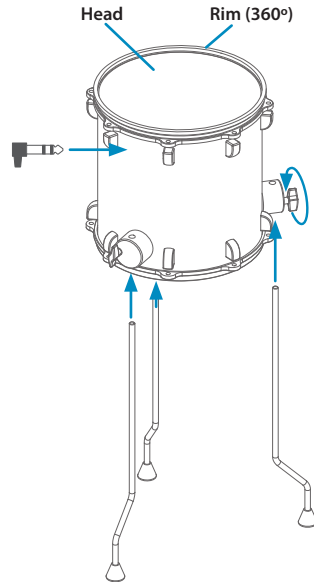
* Supported rod mount: $\phi 9.5 - \phi 12.0$ mm

■ Wood Shell Models (EFD-T1070, -T1212, etc.)

(Representative models are shown)



* Supported rod mount: $\phi 9.5 - \phi 12.0$ mm



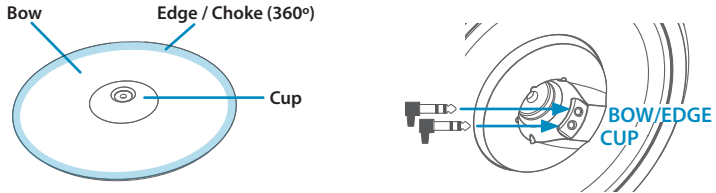
- * Adjust the tension of the drum head appropriately before use. If the tension is insufficient, the sensitivity will be inconsistent.
- * As you play for an extended time, the drum head tension gradually loosens. Adjust the tension periodically.
- * The mesh drum head or the hoop rubber is a consumable item. If it is damaged, replace it as soon as possible.

Cymbal

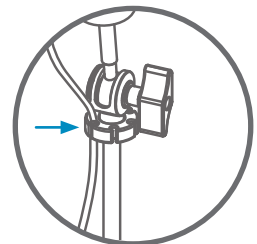
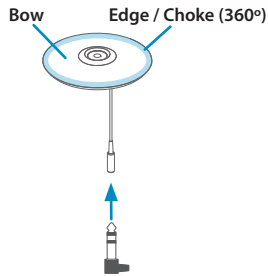
■ Standard Cymbal (EFD-C16, -C18, etc.)

■ Ride Cymbal (EFD-C20)

(Representative model is shown)

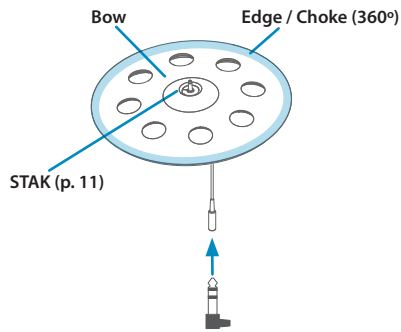


■ Splash Cymbal (EFD-C08)

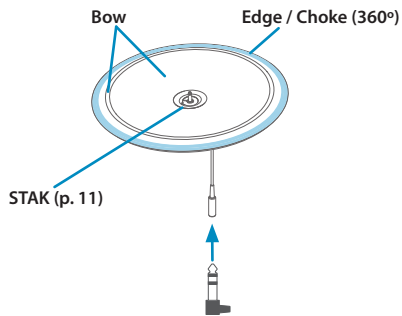


- * Clamp the cymbal cables to prevent them from being unplugged unexpectedly.
- * The cymbal rotates freely. Take care that the cable is not unplugged or broken during performance.
- * Do not leave a heavy object resting on the cymbal.

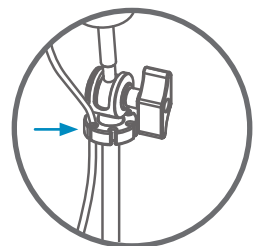
■ Effect Cymbal (EFD-C17FX)



■ China Cymbal (EFD-C18CH)



- * Clamp the cymbal cables to prevent them from being unplugged unexpectedly.
- * The cymbal rotates freely. Take care that the cable is not unplugged or broken during performance.
- * Do not leave a heavy object resting on the cymbal.

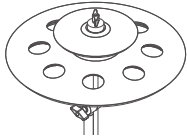


Flex Cymbal Mount STAK™**EFD-C17FX****EFD-C18CH**

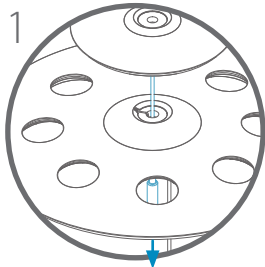
STAK feature realizes a flexible cymbal mounting style.

Stacked with a splash cymbal

You can hit the each cymbal individually, or both simultaneously.

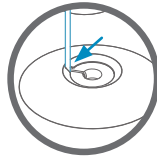


1



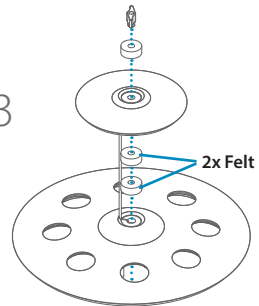
Pass the splash cable through the hole and pull it down.

2

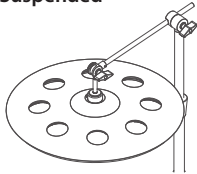


Then put the cable into the slit.

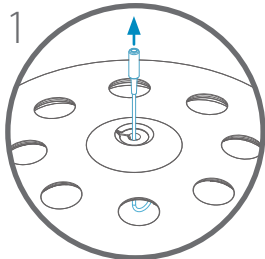
3



Cymbal Mount Extension

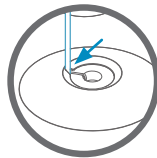
Suspended

1



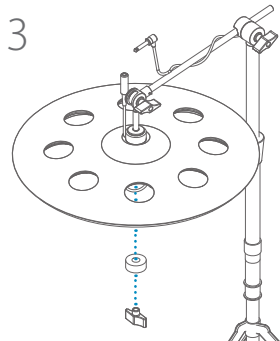
Pass its own cable through the hole and pull it up.

2



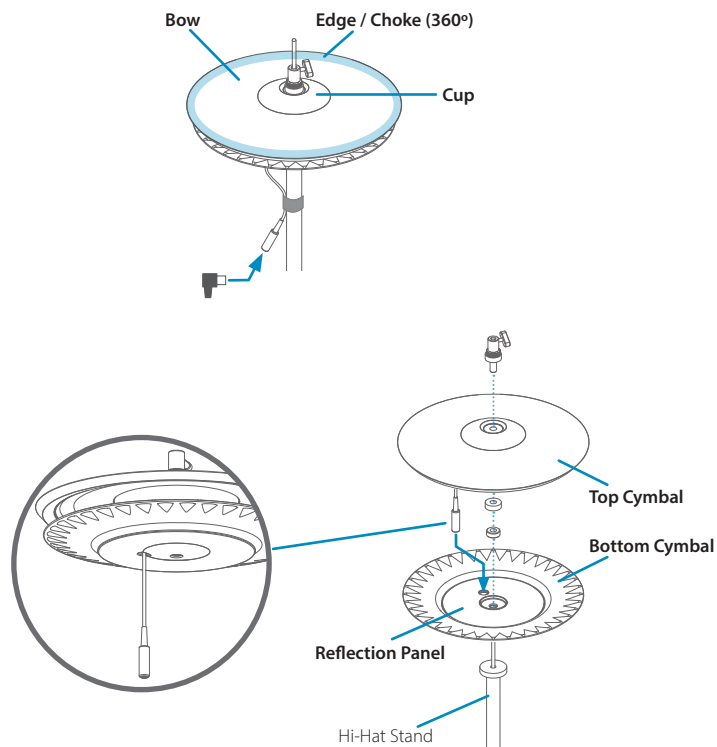
Then put the cable into the slit.

3



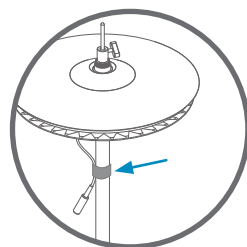
Hi-Hat

■ EFD-H14

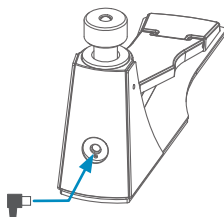


* Hi-hat stand not included.

- * Tie the cable to allow the hi-hat to open/close smoothly and to prevent the cable from being unplugged unexpectedly.
- * The cymbal rotates freely. Take care that the cable is not unplugged or broken during performance.
- * The cup of hi-hat is available only with supported sound modules.
- * Commercially available hi-hat stands compatible with $\phi 12.7$ mm (1/2") hole cymbal can be used.
- * Take care that the reflection panel does not become soiled. The performing characteristics might be degraded if this occurs. If it becomes soiled, wipe it clean with a damp cloth.
- * If the sensor is subjected to extremely strong light, it might malfunction.
- * Do not leave a heavy object resting on the cymbal.

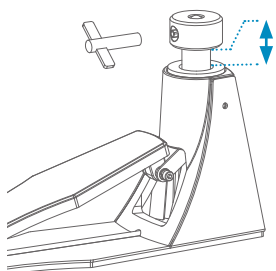


■ Hi-Hat Pedal (EFD-HC3)

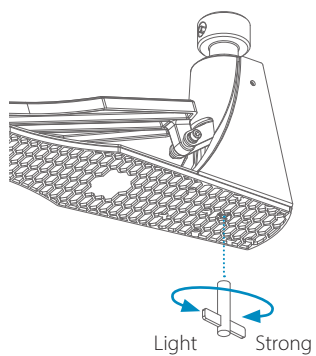


Adjusting the Hi-Hat Pedal

Stroke gap between open and closed



Spring tension



* Be careful not to pinch your fingers.

* Be careful not to tighten or loosen too much. Overtightening may cause damage.

E F N O T E

ef-note.com