

E F N O T E D R U M S

EFNOTE PRO series
EFNOTE 3 / 5 / 7 series
EFNOTE mini series

ASIO Driver Installation Guide



Install

- * The ASIO driver is required only for Windows PCs.
- * For the latest supported OS information, refer to the EFNOTE website (p. 4).
- * Restart is required after the installation.
- * The USB connectivity is not guaranteed for all environments. Some computers may not be fully compatible.

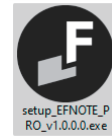
1

EFNOTE 3/5/7
EFNOTE mini



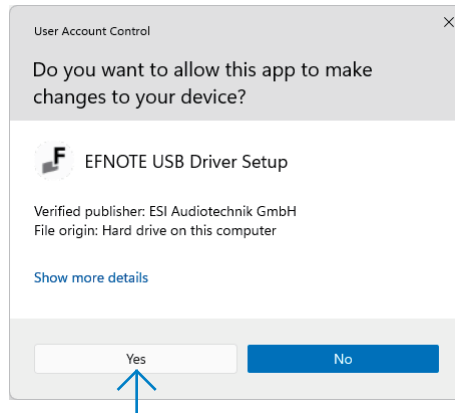
setup_EFNOTE_vXXXX

EFNOTE PRO

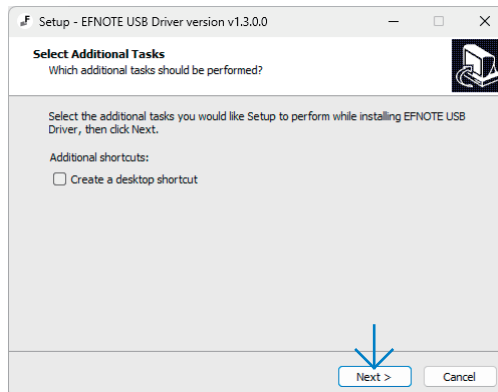


setup_EFNOTE_PRO_vXXXX

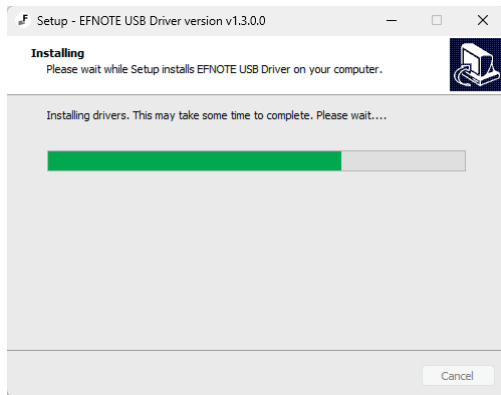
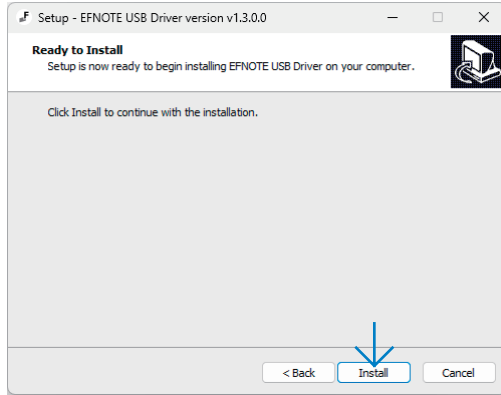
2



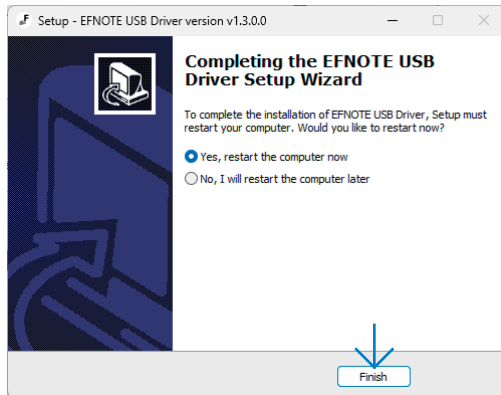
3



4



5

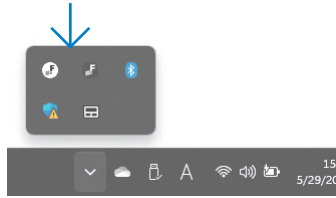


Uninstall

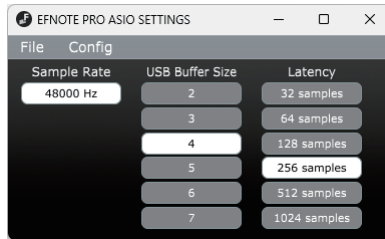
You can uninstall the driver from the Windows Settings > Apps.

Settings

1



2



In cases like the following, increasing the USB Buffer Size or Latency settings might solve the problem.

- Some dropouts, clicks, or pops occur on the audio-streaming
- DAW or audio recording software shows an error because of buffer underrun

- * The sample rate setting cannot be changed.
- * DAW software might change the latency setting.
- * Even if the settings window is closed, the driver continues to work.

For the latest information, please refer to the EFNOTE website.

ef-note.com/support



- * Specification and design are subject to change without prior notice.
- * Microsoft and Windows are either registered trademarks or trademarks of Microsoft Corporation.
- * ASIO is a trademark and software of Steinberg Media Technologies GmbH.
- * Company names or product names etc. appearing in this document are the registered trademarks or trademarks of their respective corporate owners.